

Cable De-burial & Re-burial Works - Offshore France

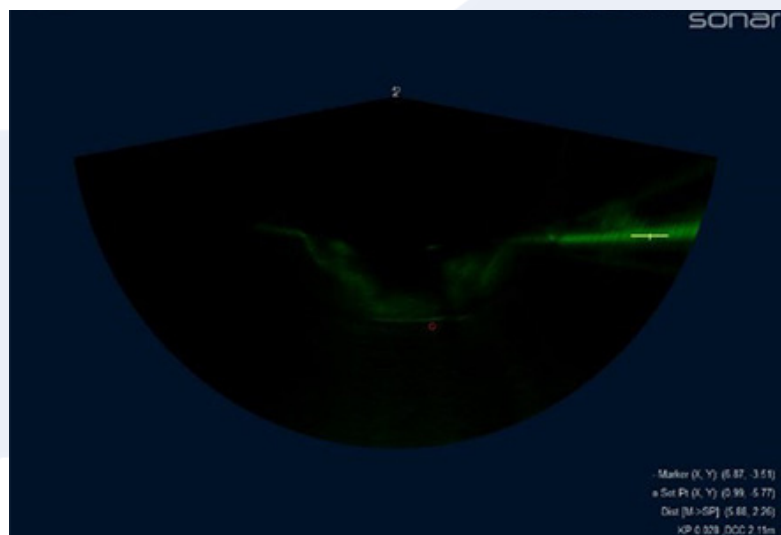
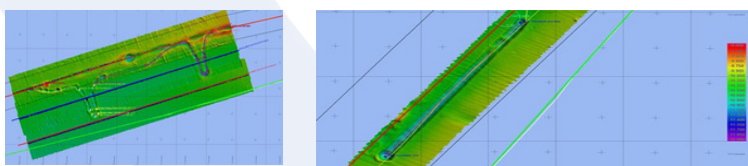


Project Overview

Rotech Subsea was contracted by Prysmian to execute cable de-burial and re-burial operations for two export cables on the Saint Nazaire Wind Farm. The scope involved de-burying cables C1 and C2, which were originally laid at a depth of 2 metres below the Mean Seabed Level (MSBL), and subsequently re-burying them to the same depth following jointing operations. The RS2 tool was selected due to its high flow capabilities, which enable exceptional de-burial performance. Its adaptable nozzle system allowed for efficient re-burial while maintaining a narrow trench profile. The spread was mobilised on the vessel Zwerver 1 during the second quarter of 2021, operating in water depths ranging from 8 to 30 metres LAT. Soil conditions at the site comprised dense sand, with a hard layer encountered at a depth of approximately 2 metres.

The Rotech Solution

The RS2's robust capabilities enabled effective single-pass de-burial to client specification, achieving progress rates of 2 to 3 metres per minute. For the re-burial phase, the RS2 delivered comparable efficiency, attaining the required burial depth in a single pass at a rate of approximately 1 to 2 metres per minute. In response to Prysmian's request, a second flushing pass was performed as a contingency. The RS2's flexible configuration and powerful performance allowed Rotech Subsea to meet all operational requirements efficiently, even in challenging soil conditions.



Results

The project concluded successfully, with Prysmian expressing high satisfaction with the RS2's technical performance. The operation not only met but exceeded expectations, delivering fast and reliable results that helped optimise project timelines and control overall costs. The successful deployment of the RS2 tool reinforced its reputation for high-performance subsea excavation, and Rotech Subsea looks forward to future collaboration with Prysmian on similar offshore projects.

Project Information

Client: Prysmian

Scope: Cable De-burial & Re-burial Works

Water Depth: 8m - 30m LAT

Soils: Dense Sands

Vessel: Zwerver 1